

# COMB



## COMB

suspension lamp

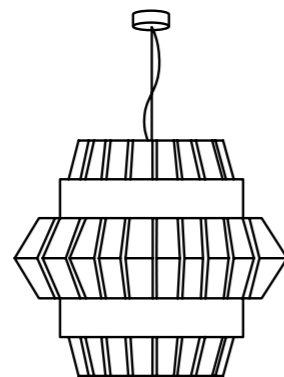
230V / 50Hz E27/1x 20W LED

120V / 60Hz E26/1x15W LED

35 lb | 16 kg

30x30x30 in  
75x75x75 cm  
0,42 m<sup>3</sup>

59" / 1,5m



Ø: 29" / 74cm  
h: 24" / 60cm



## COMB I

suspension lamp

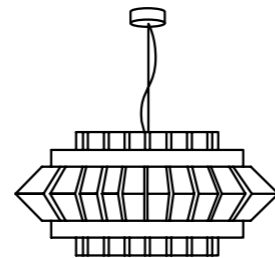
230V / 50Hz E27/1x 20W LED

120V / 60Hz E26/1x15W LED

35 lb | 16kg

30x30x30 in  
75x75x75 cm  
0,23 m<sup>3</sup>

59" / 1,5m



Ø: 30" / 75cm  
h: 14" / 35cm



## COMB WALL

wall lamp

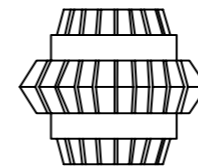
230V / 50Hz E14/1x 20W LED

120V / 60Hz E12/1x15W LED

11 lb | 5 kg

14x10x22 in  
35x25x56 cm  
0,05 m<sup>3</sup>

59" / 1,5m



w: 15" / 37cm  
d: 5" / 13cm  
h: 13" / 34cm



## COMB FLOOR

floor lamp

230V / 50Hz E27/1x 20W LED

120V / 60Hz E26/1x15W LED

30lb | 14 kg

24x24x70 in  
60x60x177cm  
0,65 m<sup>3</sup>

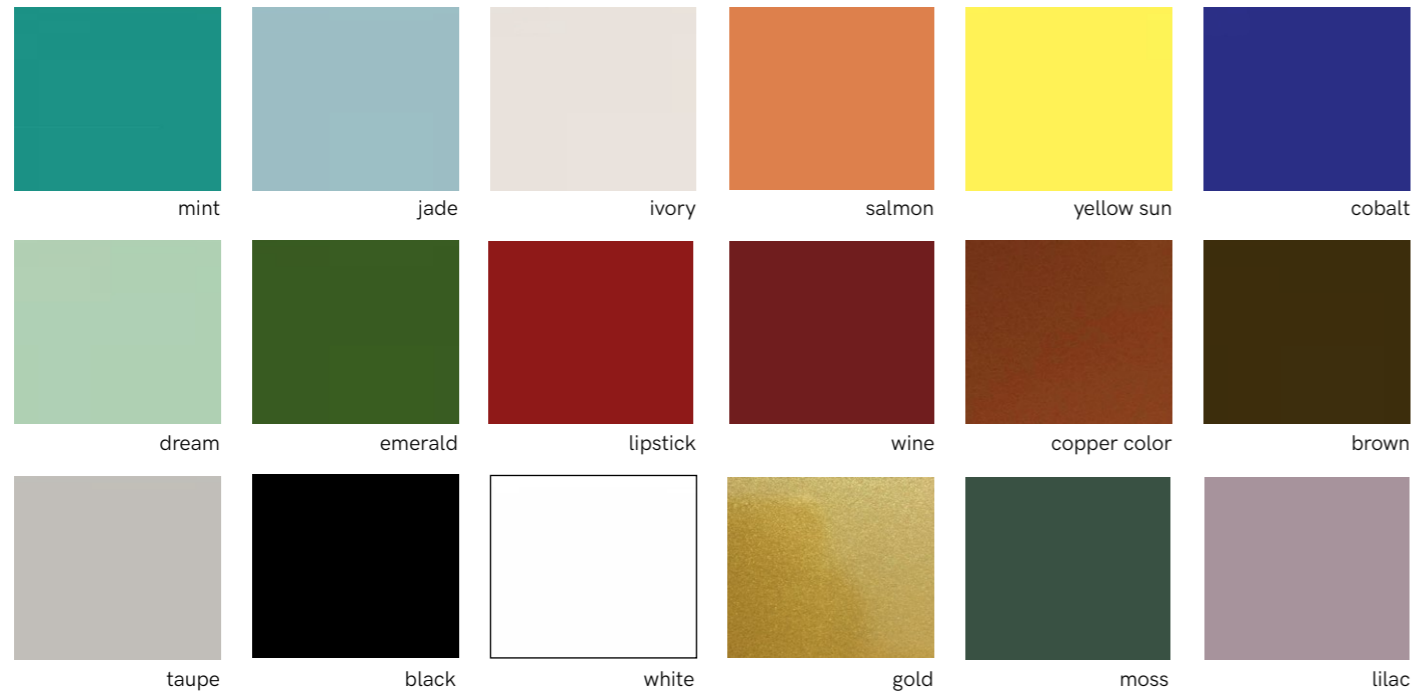
59" / 1,5m



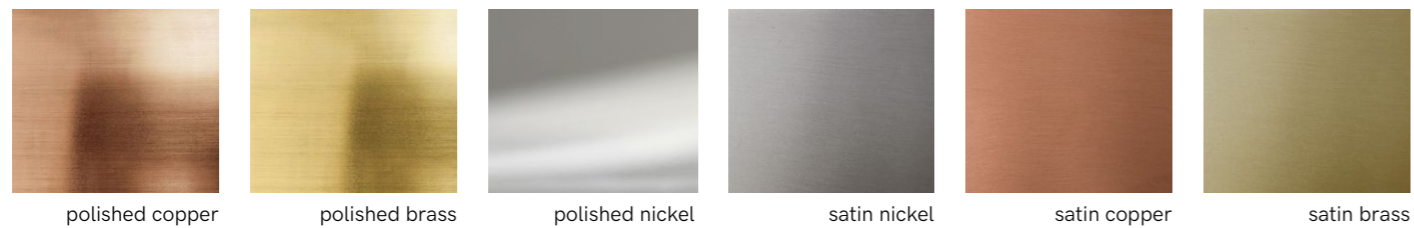
Ø: 21" / 54cm  
h: 69" / 175cm

# FINISHINGS

## lacquered metal



## polished and satin metal available only for rings



**POLISHED AND SATIN METAL PIECES**  
 this product is handmade; any small stain or roughness is a feature of the product, not a defect.

**cup** cup color matches the lamp



## ords

### Suspension lamps

Standard cord length is 1,5m.

#### Standard cord options

Brown textile cord (standard for all lamps except black ones)



Black textile cord (standard for all black lamps)



Transparent rubber cord (under request)



\* You may choose from the above with no extra charge.

*Additional length is available for suspension lamps, on extra charge.*

#### Non-standard cord options

Yellow textile cord on extra charge



Black and white textile cord on extra charge



Red and black textile cord on extra charge



### Floor lamps

Standard cord is in transparent rubber, for all models and finishes, with a length of 1,5m.

#### Cord options

White rubber cord *no surcharge*

Black rubber cord *no surcharge*

Black textile cord *on extra charge*

USA plug *on extra charge*